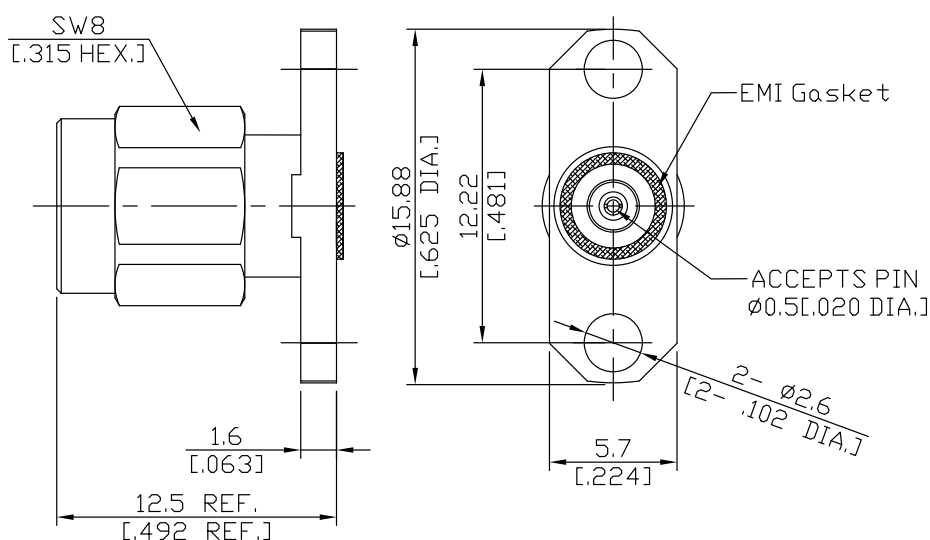
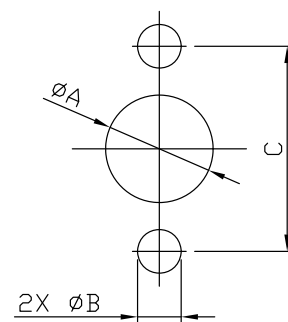


**SMA Plug(Male) Straight Field Replaceable Connector, 2 Hole Flange Mount,
12.22 mm (.481 inch) Hole Spacing, DC-18 GHz, VSWR 1.25**

SMA1BT50-0020A-EMI / 9XX



Mounting Dimension



	mm		inch	
	Max.	Min.	Max.	Min.
A	4.2	4.1	.165	.161
B	2.7	2.6	.106	.102
C	12.25	12.15	.482	.478

All dimensions are in mm [inch]

Tolerances according to DIN ISO 2768-mH

Interface

According to

IEC 60169-15; CECC 22110; MIL-PRF-39012; MIL-STD-348B/310; EN 122110

Electrical Data

Impedance	50 Ω
Frequency	DC to 18 GHz
VSWR (Return Loss)	≤ 1.25 (≥ 19.08 dB)
Insertion Loss	≤ 0.04 x √F (GHz) dB
Insulation Resistance	≥ 5 GΩ
Center Contact Resistance	≤ 3.0 mΩ
Outer Contact Resistance	≤ 2.0 mΩ
Test Voltage	1000 V rms
Working voltage	480 V rms
Power handling	≤ 200 W @ 2 GHz

-VSWR in practical applications depends on the installation process-

Material And Plating

Piece Parts	Material	Plating
Centre contact	Beryllium Copper	Gold plating (Non-magnetic nickel-phosphorus underplating)
Body	Stainless Steel	Passivated
Insulator	PTFE	
Gasket	Silicone Rubber	
Coupling nut	Stainless Steel	Passivated
EMI Gasket	Conductive Silicone Elastomers	

**SMA Plug(Male) Straight Field Replaceable Connector, 2 Hole Flange Mount,
12.22 mm (.481 inch) Hole Spacing, DC-18 GHz, VSWR 1.25**

SMA1BT50-0020A-EMI / 9XX

Mechanical Data

Coupling mechanisms	Screw-lock
Mating Cycles	≥ 500
Captivated Type	Mechanical
Center Contact Captivation: axial	≥ 27 N
Coupling Test Torque	max. 1.70 Nm
Recommended Torque	0.80 Nm to 1.1 Nm

Environmental Data

Temperature Range	-65°C to +165°C
Thermal shock	MIL-STD-202, Meth. 107, Cond. B
Corrosion	MIL-STD-202, Meth. 101, Cond. B
Vibration	MIL-STD-202, Meth. 204, Cond. D
Shock	MIL-STD-202, Meth. 213, Cond. I
Moisture Resistance	MIL-STD-202, Meth. 106
RoHS	compliant

Packing

Single or 100